

**Primer
Congreso
Internacional de
Planeamiento,
Prospectiva y
Desarrollo
Nacional.**



Centraal Planbureau

CPB | Economic Policy Analysis

Home Forecasts Publications Themes Calendar In depth About CPB

Macro Economic Outlook 2023

Projections September 2022

Temporary policy softens impact of energy crisis in 2023

Read more →

Projections and figures

World Trade Monitor August 2022 →
Projections September 2022 (MEV 2023) →
Projections August 2022 →
Projections March 2022 (CEP 2022) →

Calendar

New → Release date next World Trade Monitor →
Old → CPB Open Day 7 December 2022 →

Current

Forecasting World Trade Using Big Data and Machine Learning Techniques →
Temporal Patterns in Economics Research →
Temporary policy softens impact of energy crisis in 2023 →
Inflation is affecting more and more people, economic growth decreases →
Do people value environmental goods? Evidence from the Netherlands →
World trade dropped slightly in March →
Alternative Work Arrangements and Worker Outcomes: Evidence from Payrolling →
Labor Supply Effects of Survivor Insurance: Evidence from Restricted Access to Survivor Benefits in the Netherlands →

Wealth, gifts, and estate planning at the end of life

We show that gifts made to heirs before death are substantial and highly responsive to taxation. Therefore, characterising them and understanding their determinants is crucial for tax design. We use high-quality, intergenerationally-linked data on wealth, gifts, and medical expenses from the Netherlands. Exploiting variation in the timing of death, we find that the wealthiest half of singles (including widows) with children transfer over 10% of their wealth to their children in anticipation of death. Giving is highly sensitive to how heavily gifts are taxed, relative to bequests.

CPB Open Day 7 December 2022

Contributing to better policies for everyone in the Netherlands. Conducting scientific research that enables politicians and policymakers to take well-considered decisions. If that appeals to you, CPB Netherlands Bureau for Economic Policy Analysis is the place to be. Come to our Open Day in The Hague on Wednesday, 7 December 2022 for information on internships, jobs and/or PhD research.

Vacancies

As a rule, CPB recruits new staff twice a year for specific job openings, but we also welcome your general application, all year round. We would very much like to hear from you — not only if you have recently completed or are about to finish your studies but also if you already have a fair amount of experience.

World Trade August

World trade volume increased 0.7% in August 2022 compared to July 2022, following 0.0% growth in July. World industrial production increased 0.5% month-on-month, having decreased 0.4% in July.

En los Países Bajos existe el **Centraal Planbureau**.

Este instituto independiente es conocido como **CPB** (por sus siglas en idioma neerlandés) y también por su denominación en idioma inglés: **CPB Netherlands Bureau for Economic Policy Analysis**.

CPB conduce investigación respecto de la economía y políticas socioeconómicas.

CPB transfiere conocimiento científico para la política pública entregando evidencia racional y fáctica a la ciudadanía y a quienes elaboran políticas públicas.

Centraal Planbureau

CPB | Economic Policy Analysis

CPB Netherlands Bureau for Economic Policy Analysis

Home Forecasts Publications Themes Calendar In depth About CPB

Macro Economic Outlook 2023

Projections September 2022

Temporary policy softens impact of energy crisis in 2023

Read more →

Projections and figures

World Trade Monitor August 2022 →
Projections September 2022 (MEV 2023) →
Projections August 2022 →
Projections March 2022 (CEP 2022) →

Calendar

Nov 25 Release date next World Trade Monitor →
Dec 7 CPB Open Day 7 December 2022 →

Current

Forecasting World Trade Using Big Data and Machine Learning Techniques →
Temporal Patterns in Economics Research →
Temporary policy softens impact of energy crisis in 2023 →
Inflation is affecting more and more people, economic growth decreases →
Do people value environmental goods? Evidence from the Netherlands →
World trade dropped slightly in March →
Alternative Work Arrangements and Worker Outcomes: Evidence from Payrolling →
Labor Supply Effects of Survivor Insurance: Evidence from Restricted Access to Survivor Benefits in the Netherlands →

Wealth, gifts, and estate planning at the end of life

We show that gifts made to heirs before death are substantial and highly responsive to taxation. Therefore, characterising them and understanding their determinants is crucial for tax design. We use high-quality, intergenerationally-linked data on wealth, gifts, and medical expenses from the Netherlands. Exploiting variation in the timing of death, we find that the wealthiest half of singles (including widows) with children transfer over 10% of their wealth to their children in anticipation of death. Giving is highly sensitive to how heavily gifts are taxed, relative to bequests.

CPB Open Day 7 December 2022

Contributing to better policies for everyone in the Netherlands. Conducting scientific research that enables politicians and policymakers to take well-considered decisions. If that appeals to you, CPB Netherlands Bureau for Economic Policy Analysis is the place to be. Come to our Open Day in The Hague on Wednesday, 7 December 2022 for information on internships, jobs and/or PhD research.

Vacancies

As a rule, CPB recruits new staff twice a year for specific job openings, but we also welcome your general application, all year round. We would very much like to hear from you — not only if you have recently completed or are about to finish your studies but also if you already have a fair amount of experience.

World Trade August

World trade volume increased 0.7% in August 2022 compared to July 2022, following 0.0% growth in July. World industrial production increased 0.5% month-on-month, having decreased 0.4% in July.

El **Centraal Planbureau** fue creado en el 3 de septiembre de 1945 a propuesta del Ministro de Asuntos Sociales.

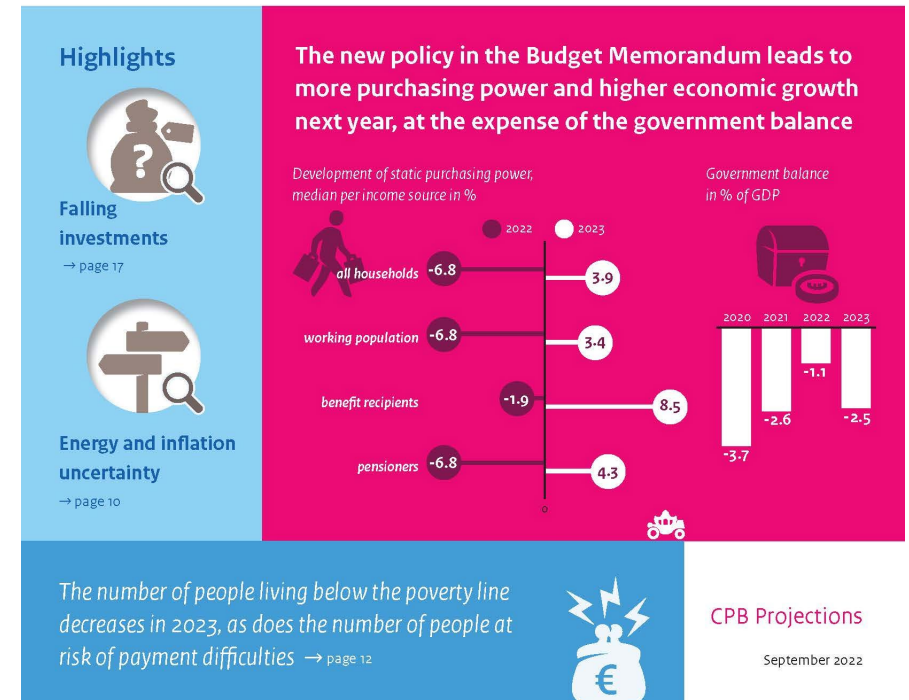
Empezó a funcionar el 15 de septiembre de 1945 y obtuvo un mandato legal el 21 de abril de 1947 a propósito de dictarse la “Ley de Preparación del Plan Económico Central”.

Política Pública

“... ‘Policy’ conveys the sense that activity is deliberate and purposeful rather than erratic or random. Developing policy in relation to (say) youth homelessness or the development of information technology skills or global climate change is an assertion of competence and rationality: things will not just happen, there will be a conscious ordering activity to bring about outcomes that are in our best interest. In this sense, policy is the counter to randomness or inertia. But it is not the only way of achieving this: terms like ‘politics’ and ‘management’ also imply the deliberate imposition of order. In what way is ‘policy’ a distinctive way of shaping action? ”

H.K Colebatch (2002) “Policy”. Second Edition, Open Press University, Bury St. Edmunds, United Kingdom, p.67.

Macro Economic Outlook 2023



Un caso de estudio: Holland Circular Hotspot

Holland Circular Hotspot



- 1.- Origen de la plataforma
- 2.- Participación de actores clave
- 3.- Sostenibilidad financiera
- 4.- Atributos e Impacto

Holland Circular Hotspot



Holland Circular Hotspot (HCH) aspira a ser un laboratorio viviente, desarrollando y compartiendo soluciones para contrarrestar los efectos del cambio climático.

La plataforma fue organizada en 2016 por compañías e institutos de conocimiento activos en el sector de residuos sólidos y reciclaje. La organización aspira a conectar la comunidad circular global; ayudando a crear las condiciones para la economía circular a nivel internacional.

Holland Circular Hotspot



- Los Países Bajos buscan ser considerados una economía circular para el 2050, reduciendo el uso de materias primas en un 50% para el año 2030.
- Se han fijado metas en la Agenda Nacional de Transición Circular para 5 sectores prioritarios: biomasa & alimentos, bienes de consumo, plásticos, construcción y manufactura.
- Para resolver asuntos delicados referidos a recursos se han suscrito 62 Acuerdos Verdes (Green Deals) entre el gobierno y los stakeholders involucrados.
 - ★ En Perú los Acuerdos Verdes se denominan “Acuerdos de Producción Limpia”.

Holland Circular Hotspot

La participación de actores clave en el **Holland Circular Hotspot (HCH)** ocurre en un contexto de consenso que permite articular la participación de diversos actores públicos y privados de distinto nivel y actividad económica.

Es decir, el Holland Circular Hotspot es una plataforma: multi – actor, multi – nivel y multi – sectorial; que aglutina actores que ejecutan actividades con alcance local, nacional y que tienen proyección internacional.

National Agreement on the Circular Economy

Letter of intent to develop transition agendas for the Circular Economy together



Partners

The drafting partners of this agreement are:

- VNO-NCW (Confederation of Netherlands Industry and Employers) and MKB-Nederland (representing small and medium-sized enterprises)
- FNV, Federatie Nederlandse Vakbeveging (Dutch Federation of Trade Unions)
- VCP, Vakcentrale voor Professionals (Trade Union Federation for highly educated professionals)
- Stichting Natuur & Milieu (Nature & Environment Foundation)
- VNG, Vereniging Nederlandse Gemeenten (Association of Netherlands Municipalities)
- IPO, Interprovinciaal Overleg (Association of Provincial Authorities)
- Unie van Waterschappen (Association of Dutch Regional Water Authorities)
- the Dutch Minister for the Environment and the Minister of Economic Affairs, also on behalf of the Minister for Housing and the Central Government Sector, and the Minister for Foreign Trade and Development Cooperation (referred to jointly hereinafter as the "National Government");

and:

supporting partners that co-endorse this agreement and would like to contribute to its implementation from the following groups:

- Entrepreneurs
- Employees
- Environmental and nature conservation organisations
- Municipalities, regions, provinces and water authorities
- Financial institutions
- Institutions of knowledge and education
- Other social organisations, partnerships and platforms

The aforementioned signatories, referred to jointly hereinafter as the "Partners", have the shared ambition of accelerating the transition to the circular economy. This transition provides many opportunities for the economy, the environment and society.

Motivation

Our society lives from what the earth and the economy have to offer us: we use raw materials to provide us with food, shelter, heating, clothing, electrical devices and mobility. Our need for raw materials will only increase in the years to come, both in the Netherlands and in the rest of the world. At the same time, we waste an abundance of raw materials, thus unnecessarily losing the value they have for us, polluting the environment and impacting the climate. It is estimated that by 2050 there will be more than nine billion people on earth that will need sufficient amounts of food and clean water. They will also want to live in good health, in safety and in prosperity within the limits that our planet can bear (the SDGs, sustainable development goals). To make this possible, we must and can take action now. It is time for the circular economy.

In recent years many Partners have taken bold steps to utilize raw materials more effectively, intelligently and profitably. Yet things can still be improved in this area. We can do this by focusing not only on quantity, but also on quality and value: by reducing our dependency on non-renewable critical raw materials and by bringing a halt to wastage and pollution. One way to achieve this is by designing products and services for long-term use, with a focus on reducing a loss in value as much as possible. This will save costs and create new jobs. It would be good for the environment and good for the economy. The Partners understand that a circular economy provides great opportunities for companies, both large corporations and small and medium-sized enterprises. The Partners plan to take advantage of these future prospects by marketing their circular products and services worldwide. The Partners also see opportunities in a circular economy to substantially reduce emissions of CO2 by managing raw materials, products and services in a sustainable and intelligent manner, thus implementing the UN Paris Agreement on Climate Change.

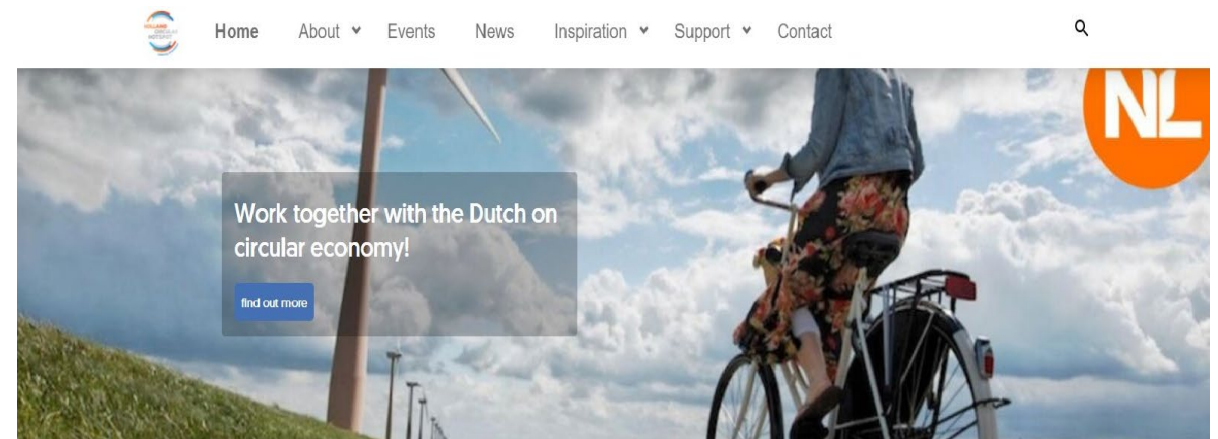
The transition that is necessary to achieve these goals presents a big challenge for all Partners. It will involve a time-consuming, complex process in which the Partners join efforts to innovate and experiment, a process in which they learn to think and work in terms of circularity, using new insights and developments. A process in which attention is also given to the effects on the labour market. The Partners subscribe to the view that the social change that is necessary can only succeed if social agenda is developed as well.

Holland Circular Hotspot

Holland Circular Hotspot tiene ingresos por:

- 1.- Servicios de consultoría.
- 2.- Patrocinios
- 3.- Aportes extraordinarios del sector público.

El equipo está compuesto por 10 personas (muchos de ellos trabajando a tiempo parcial) y eventualmente recurre a la subcontratación de expertos para realización de consultorías.



The international gateway of the Dutch circular economy

Holland Circular Hotspot is a private-public platform in which companies, knowledge institutes and (local) authorities collaborate to promote and support international collaboration and knowledge exchange on Dutch circular economy.

Find out what Holland Circular Hotspot can do for you:

Support for Dutch circular entrepreneurs

Support for parties outside The Netherlands

[Check out themes we work on](#) →



Holland Circular Hotspot

La economía de los Países Bajos era considerada 24.5% circular, de acuerdo al reporte denominado “Circularity Gap Report, The Netherlands” elaborado por la consultora Circle Economy en 2020.

(<https://www.circle-economy.com/resources/circularity-gap-report-the-netherlands>).



☰ CIRCLE ECONOMY

CIRCULARITY GAP REPORT, THE NETHERLANDS



The Netherlands is a global frontrunner in the race to circularity with a Circularity Metric of 24.5%. However, the government has ambitious goals: an economy that is 50% circular by 2030 and 100% circular by 2050. The Circularity Gap Report, the Netherlands, recommends wide-ranging ways in which the economy can pivot away from its linear habits across four key sectors: agriculture, construction, manufacturing and energy. The suggested strategies could triple the Dutch metric from 24.5% to 70%.

About Circularity Gap Report for countries

More and more countries are recognising the circular economy as a means to make their economies more competitive, improve living conditions for growing populations, help meet emissions targets and avoid deforestation. But how countries reach an ecologically safe and socially just development space for their people varies greatly. The Circularity Gap Report for Countries provides insight into the best interventions to boost circularity on a national level and the tools to monitor progress.

About the Circularity Gap Initiative

The Circularity Gap Initiative aims to highlight the urgency of the transition to a circular economy and inspire key decision makers in both government and business to coordinate action to accelerate that transition. We do this by bringing together stakeholders from academia, businesses, NGOs and governments to input, evaluate and endorse annual reports on the state of the transition based on the latest scientific evidence.

Holland Circular Hotspot



- 1.- Política pública
- 2.- Personería jurídica
- 3.- Cooperación entre actores nacionales
- 4.- Sectores priorizados
- 5.- Promoción empresarial
- 6.- Difusión y educación
- 7.- Diseño de políticas públicas

José Alberto Del Corral Parodi

Agregado de Asuntos Políticos, Desarrollo y Comercio

jose.delcorralparodi@minbuza.nl

(+51) 982 516 570

**Embajada del Reino de los Países Bajos para Perú,
Ecuador y Bolivia**

Av. Larco 1301, piso 13, Miraflores, Lima

Centraal Planbureau

<https://www.cpb.nl>

**CPB Netherlands Bureau for Economic Policy
Analysis**

